



1

Each cell has a Column letter and a Row number, like A2.

	A	B	C	D	E	F
1				Beth	12	
2		15			Dan	3
3	Anil					
4				28		Raj
5			9			
6	5		Sara			Ali
7		Piet			17	

In the Spreadsheet above, cell C5 contains the number 9, cell E2 contains the word Dan.

What do these cells contain:

- | | |
|------------|------------|
| 1) D4..... | 2) E1..... |
| 3) A5..... | 4) E7..... |
| 5) F2..... | 6) B2..... |

What is the Column/Row address of the cells containing:

- | | |
|---------------|----------------|
| 7) Anil | 8) Piet |
| 9) Sara | 10) Beth |
| 11) Raj | 12) Ali |

2



Maria buys cakes for £2.50, juices for £1.80, biscuits for £2.88, cereals for £8.40 and milk for 90p.

- Make a Spreadsheet to show this.
- Can you make the Spreadsheet calculate the total cost?
- Try to put helpful headings and use different coloured backgrounds to make the sheet clearer.

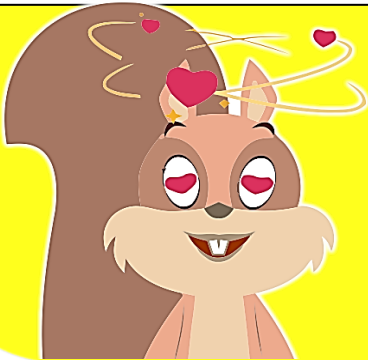
3

Cells can contain formulas. These can do things like + and -.

Formulas begin with an =, like this: = E12 + C2.

Try to answer these questions:

	A	B	C	D
1	5	7	12	4
2	3	11	1	1
3	2	2	5	10
4	15	6	8	14
5	10	13	2	3



What is the result of these formulas?

- 1) =B1.....
- 2) =C5+A4
- 3) =D3-B4.....
- 4) =C4/A3.....
- 5) =D1*A2.....
- 6) =B1+C3+D2.....
- 7) =SUM(A1:A3).....
- 8) =SUM(B2:D2).....

4

Copy these data for Sammy Squirrel's acorns into your Spreadsheet.

	A	B	C	D	E	F
1						
2		Month	Acorns	Eaten	Left	
3		May	8	6		
4		June	5	2		
5		July	7	3		
6		Total				
7						



- 1) Try to put a formula into cell C6 to sum the acorns for May, June and July
- 2) Put a formula into cell D6 to work out how many acorns in total were eaten in May, June and July
- 3) Put a formula into cell E3 to work out how many acorns were left in May (hint: acorns minus eaten)
- 4) Do the same for June and July
- 5) What formula would give you the total of all "Left" acorns? Where would you put it?